

Project Name:	Part Number:	Type:
---------------	--------------	-------

UFO PARKING GARAGE

OUTDOOR



407-478-3759
www.ilp-inc.com

FEATURES

- Die-cast aluminum round parking garage fixture
- Bronze & white housing (std.), contact factory for pricing for other options
- Frosted polycarbonate lens (std.)
- 3000K, 4000K, & 5000K available
- Quick mount bracket standard for easy surface mount installation
- ½" Coin plug on top for center pendant mount or jbox with included cord lock
- Four ½" coin plugs on sides for conduit or photocell
- Motion & bi-level dim control options available
- Sensor Ready for Grouping/Zones & IoT (provided by others)
- 0-10V Dimmable Driver
- IP66 Rated
- 120-277V Universal Voltage
- 5 Year Warranty
- ETL Listed for Wet Locations
- DesignLights Consortium® Premium Qualified Luminaire



SUITABLE APPLICATIONS

- Parking Garages
- Entrance Way
- Canopy Walkways
- Car Wash

LED SYSTEMS INFO		28W	40W	58W	75W		28W	40W	58W	75W
Calculated L70 (TM-21)	4000K	>100K	>100K	>100K	>100K	4000K LOW BAY	>100K	>100K	>100K	>100K
Delivered Lumens		3,450 lm	4,985 lm	7,135 lm	9,266 lm		3,819 lm	5,567 lm	7,260 lm	9,482 lm
Total Input Watts		27 W	42 W	57 W	76 W		27 W	40 W	58 W	77 W
Luminaire Efficacy Rating (LER)		124 lm/W	118 lm/W	125 lm/W	121 lm/W		144 lm/W	139 lm/W	126 lm/W	124 lm/W
Correlated Color Temperature (CCT)		4000K	4000K	4000K	4000K		4000K	4000K	4000K	4000K
Color Rendering Index (CRI)		>80	>80	>80	>80		>80	>80	>80	>80
Maximum Ambient Temperature		120°F	110°F	120°F	120°F		130°F	130°F	130°F	125°F
Universal Driver		120-277 V	120-277 V	120-277 V	120-277 V		120-277 V	120-277 V	120-277 V	120-277 V

LED System data above based on UFO-28WLED-UNIV-40, UFO-40WLED-UNIV-40, UFO-58WLED-UNIV-40, UFO-75WLED-UNIV-40, UFO-28WLED-UNIV-40-LB, UFO-40WLED-UNIV-40-LB, UFO-58WLED-UNIV-40-LB & UFO-75WLED-UNIV-40-LB. LED Lumen Maintenance Estimates based on TM-21 projections for the light source at 25°C ambient. [ADDITIONAL LED INFO AVAILABLE ON PAGE 2.](#)

ORDERING GUIDE:

Series	Watts	Driver	Color	Options	
UFO	28WLED	UNIV 120-277 Driver	50	WHT	White Fixture Housing
	40WLED		40	LB	Low Bay
	58WLED		30	CORDx	Cord (x = ft)
	75WLED		WLOS	Wet Location Occupancy Sensor	
			USBD	User Select Bi-Level Dim w/ Occ. Sensor	
	BDxx	Preset Bi-Level Dim Sensor (xx=% e.g. 20, 30)			
	BDxxPC	Preset Bi-Level Dim Sensor w/ Photocell			
	PC	Photocell Universal Voltage (120-277V)			
	SMLxxxx	Specified Max Lumen Output (xxxx = lumen output)			
	FSIR/100	Remote Configuration Tool (WLOS, USBD, BDxx, & BDxxPC)			
	LPL-INT	Limelight by Lutron Daylight & Occupancy			
	SRP-281	OS-NET Sensor Remote Programmer			
	BCS	Bird Cone Shield - Used w/ Pendant Mount Only			
	TB	Trunnion Mount Bracket			
	SP1**	10kA Max Univolt Surge Protector			
	SP2**	22kA Max Univolt Surge Protector			
	SP480V2	20kA Max 480V Surge Protector			
	FUSE/SXXX	Single-line Voltage Fuse (120, 277, 347)			
	FUSE/DXXX	Dual-line Voltage Fuse (208, 240, 480)			
	LEDBBCT	-4°F - 80°F LED Battery Backup			
	ILBCP05	5W Battery Backup Factory Installed (32°F - 100°F)			
	SD480*	480V Step Down Transformer			
	SD347*	347V Step Down Transformer			

* Option not currently DLC Qualified
** SP1/SP2 specified in combination w/ battery backup/dual driver separate surge units are required per electrical line

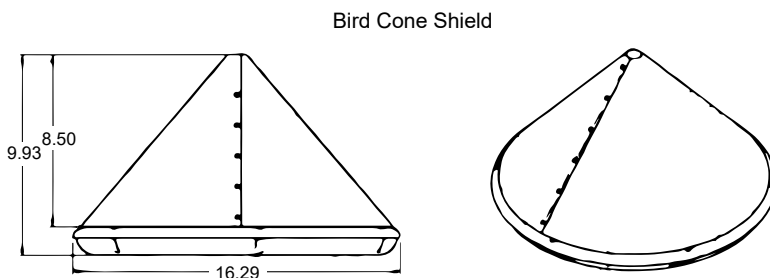
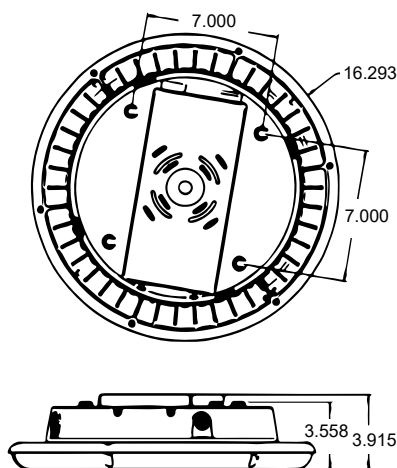
UFO PARKING GARAGE

OUTDOOR

ADDITIONAL LED INFO	28W	40W	58W	75W		28W	40W	58W	75W
Calculated L ₇₀ (TM-21)	>100K	>100K	>100K	>100K	5000K LOW BAY	>100K	>100K	>100K	>100K
Delivered Lumens	3,462 lm	5,014 lm	7,171 lm	9,275 lm		3,864 lm	5,610 lm	7,297 lm	9,640 lm
Total Input Watts	28 W	42 W	57 W	76 W		27 W	40 W	58 W	77 W
Luminaire Efficacy Rating (LER)	126 lm/W	119 lm/W	126 lm/W	123 lm/W		146 lm/W	140 lm/W	127 lm/W	126 lm/W
Correlated Color Temperature (CCT)	4000K	4000K	4000K	4000K		5000K	5000K	5000K	5000K
Color Rendering Index (CRI)	>80	>80	>80	>80		>80	>80	>80	>80
Maximum Ambient Temperature	120°F	110°F	120°F	120°F		130°F	130°F	130°F	125°F
Universal Driver	120-277 V	120-277 V	120-277 V	120-277 V		120-277 V	120-277 V	120-277 V	120-277 V

LED System data above based on UFO-28WLED-UNIV-50, UFO-40WLED-UNIV-50, UFO-58WLED-UNIV-50, UFO-75WLED-UNIV-50, UFO-28WLED-UNIV-50-LB, UFO-40WLED-UNIV-50-LB, UFO-58WLED-UNIV-50-LB & UFO-75WLED-UNIV-50-LB. LED Lumen Maintenance Estimates based on TM-21 projections for the light source at 25°C ambient.

LINE DRAWING

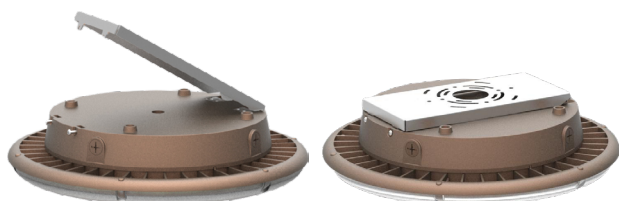


UFO PARKING GARAGE

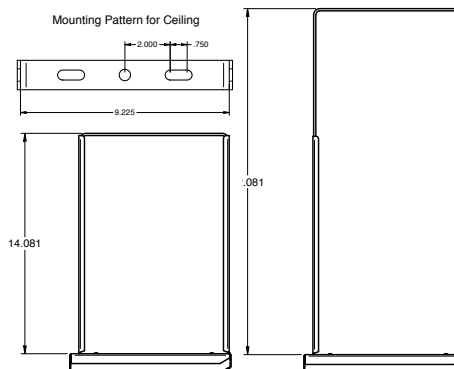
OUTDOOR

MOUNTING OPTIONS

- **Quick Mount Bracket** - Standard for base of installation when surface mounting to either the ceiling or junction box
- **Pendant** - 1/2" threaded pendant can be mounted through 1/2" coin plug on top of fixture (Supplied by other)
- **TB** - Trunnion Mount Bracket

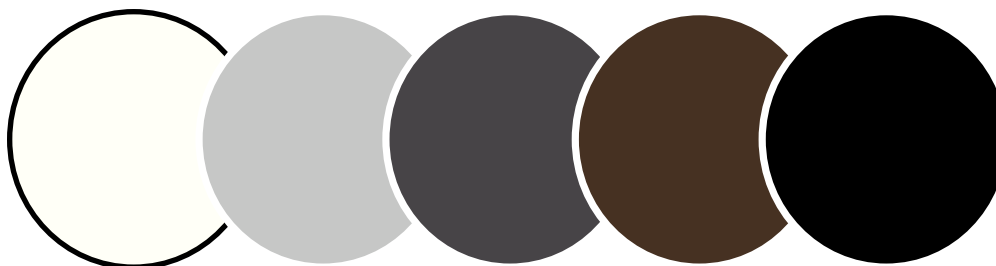


Quick Mount Bracket



Trunnion Mount Bracket

FACTORY SELECT COLOR GUIDE



White

Silver

Bronze

Brown

Black

COLOR NAME AND DESCRIPTION	SHEEN	PRODUCT	VENDOR	PRICING
WHT - ILP White - std. & in stock	SEMI GLOSS	POLANE T	SHERWIN-WILLIAMS	Standard
SLV - ILP Silver - Ultrasonic Chrome	GLOSS	POLANE T	SHERWIN-WILLIAMS	Contact Factory for Pricing
BRZ - ILP Bronze - std. & in stock	SEMI GLOSS	POLANE T	SHERWIN-WILLIAMS	Standard
BRN - ILP Brown	SEMI GLOSS	POLANE T	SHERWIN-WILLIAMS	Contact Factory for Pricing
BLK - ILP Black	SEMI GLOSS	POLANE T	SHERWIN-WILLIAMS	Contact Factory for Pricing

**COLORS SHOWN ABOVE ARE TO BE USED AS REFERENCE, NOT EXACT MATCH.
PLEASE REQUEST PAINT CHIPS FOR EXACT MATCH.**

UFO PARKING GARAGE

OUTDOOR

PHOTOMETRIC REPORTS

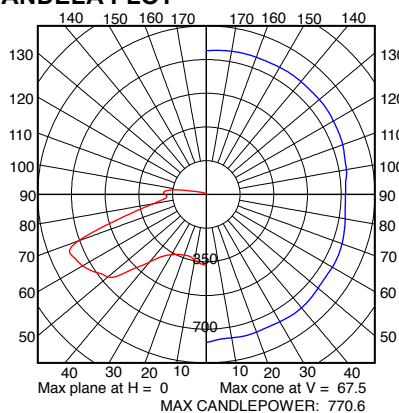
Photometric values based upon tests performed in compliance with LM-79. IES files can be downloaded at www.ilp-inc.com

UFO-28WLED-UNIV-40

SUMMARY DATA

HEMISPHERES TESTED:	BOTH
EFFICIENCY (Down/Up):	90.9 % / 9.1 %
EFFICIENCY (Street/House):	49.9 % / 50.1 %
ROADWAY CLASSIFICATION:	TYPE V
CUTOFF CLASSIFICATION:	NON CUTOFF
LUMENS:	3384
INPUT WATTS:	27.7

CANDELA PLOT

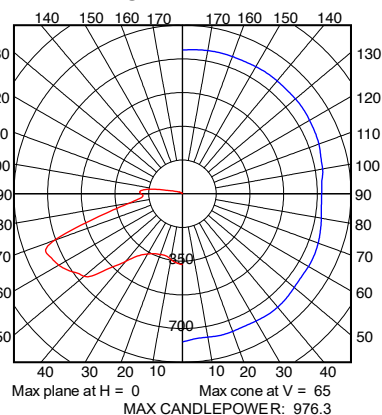


UFO-40WLED-UNIV-40

SUMMARY DATA

HEMISPHERES TESTED:	BOTH
EFFICIENCY (Downlight):	90.2 % / 9.8 %
EFFICIENCY (Uplight):	50.0 % / 50.0 %
ROADWAY CLASSIFICATION:	TYPE V
CUTOFF CLASSIFICATION:	NON CUTOFF
LUMENS:	4718.64
INPUT WATTS:	42.77

CANDELA PLOT

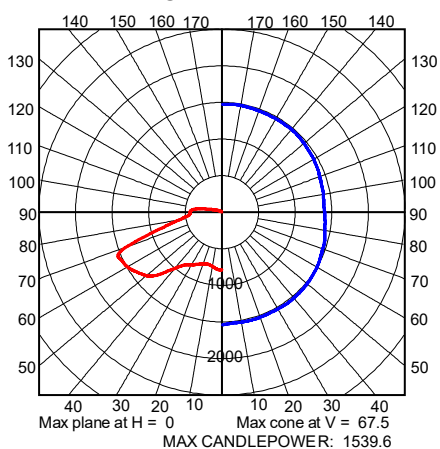


UFO-58WLED-UNIV-40

SUMMARY DATA

HEMISPHERES TESTED:	BOTH
EFFICIENCY (Down / Up):	90.7 % / 9.3 %
EFFICIENCY (Street / House):	50.0 % / 50.0 %
ROADWAY CLASSIFICATION:	TYPE V
CUTOFF CLASSIFICATION:	NON CUTOFF
LUMENS:	7015
INPUT WATTS:	57

CANDELA PLOT



UFO-75WLED-UNIV-40

SUMMARY DATA

HEMISPHERES TESTED:	BOTH
EFFICIENCY (Down / Up):	90.9 % / 9.1 %
EFFICIENCY (Street / House):	50.0 % / 50.0 %
ROADWAY CLASSIFICATION:	TYPE V
CUTOFF CLASSIFICATION:	NON CUTOFF
LUMENS:	9148
INPUT WATTS:	77

CANDELA PLOT

