

IMPORTANT SAFEGUARDS

When using electrical equipment, basic safety precautions should always be followed including the following:

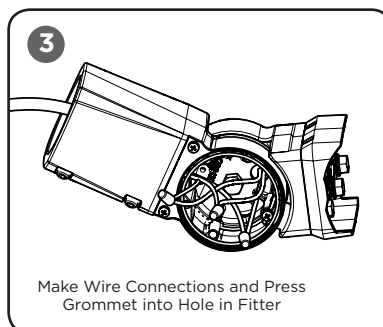
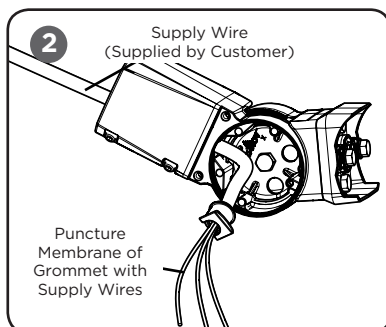
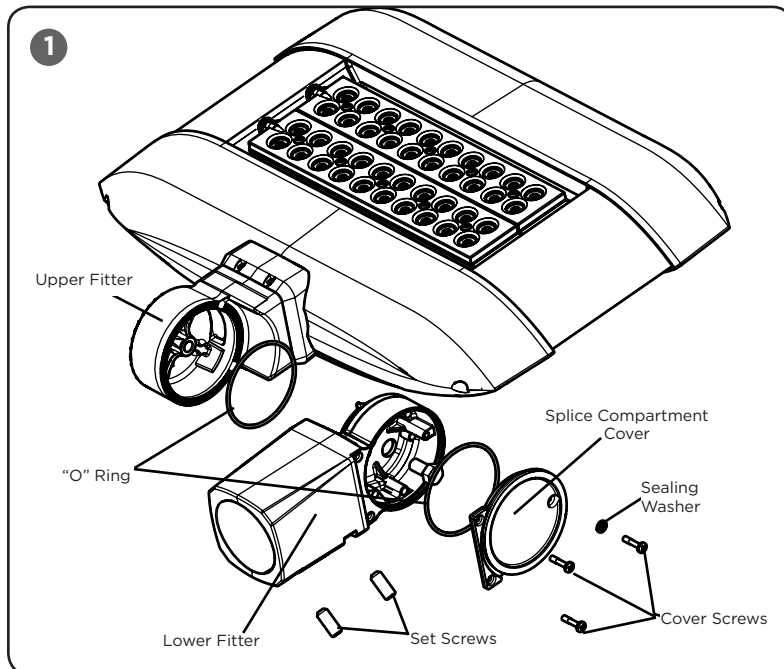
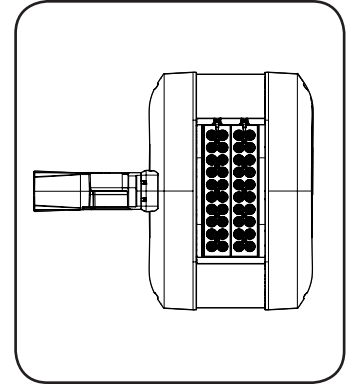
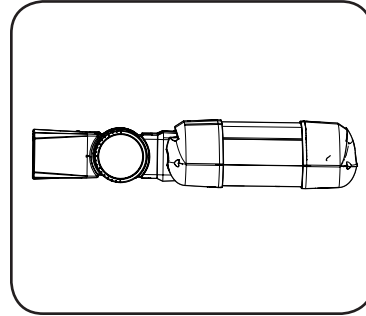
READ AND FOLLOW ALL SAFETY INSTRUCTIONS

1. To avoid the possibility of electrical shock, turn off power supply before installation or servicing. Installation and servicing should be performed by qualified personnel.
2. When handling, hold fixture on sides to prevent damage to the top screen or LED's.
3. Product must be installed in accordance with NEC or your local electrical code. If you are not familiar with these codes and requirements, consult a qualified electrician.
4. Strain relief is required for electrical connections on 2" (51 mm) adjustable fitter mounts at heights of 25' (7.6 m) and above. Tie a knot in the supply wires above the hole in the lower fitter wiring compartment to reduce the strain on the connections. Make sure knot will not slip through hole.
5. Take care to keep the LED lenses clean during installation.

SAVE THESE INSTRUCTIONS FOR FUTURE REFERENCE

TO INSTALL:

INSTALLATION INSTRUCTIONS



MOUNTING

STEP 1:

Remove the splice compartment cover from the lower fitter.

STEP 2:

Route the supply wires into the lower fitter wiring compartment by puncturing the internal seal with the supply wires.

STEP 3:

Strain relief is required for electrical connections on the adjustable fitter mount for mount heights of 25' (7.6 m) and higher. Tie a knot in the supply wires above the hole in the lower fitter wiring compartment to reduce the strain on the connections. Make sure knot will not slip through hole.

STEP 4:

Slip lower fitter over 2-3/8" (60 mm) O.D. heavy wall pipe or tenon and securely tighten two Allen head set screws with 3/16" Allen wrench to 18 ft. lbs. (24 N•m). See **Figure 1**.

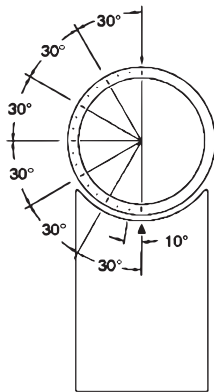
STEP 5:

Make wire connections in splice compartment of adjustable fitter. See **Figure 3, 4 and "ELECTRICAL CONNECTION"** section.

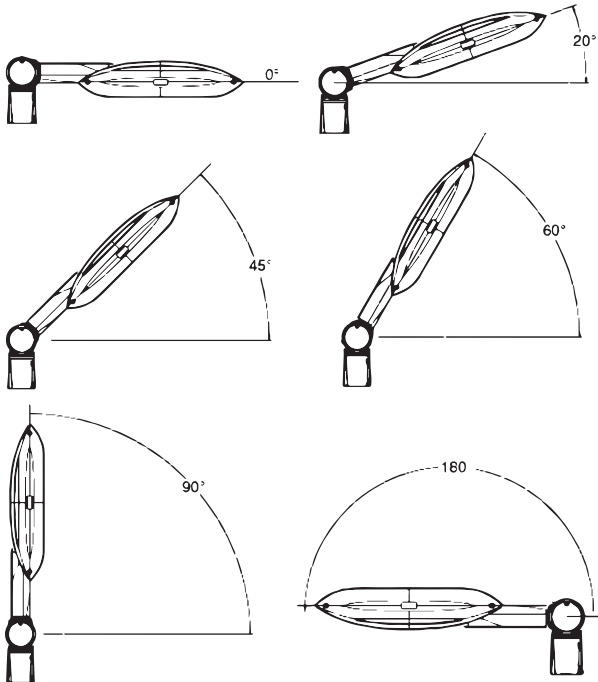
4

Typical Pole Mounted Positions

1/2" and 2" (51 mm)
Adjustable Fitter Positions



Major Divisions: 30°
Minor Divisions: 10°
1/2" Fitter: 5° Increments
2" (51 mm) Fitter: 2-1/2° Increments



FIXTURE AIMING

STEP 1:

Adjust fixture to desired aiming angle. The fixture may be aimed at 2-1/2° increments. Markings are located on outside of fitter for ease of aiming. See **Figure 4**.

STEP 2:

Tighten 3/8" bolt in fitter splice compartment to approximately 19 ft.lbs. (25 N•m).

STEP 3:

Replace the lower fitter compartment cover and tighten screws, making sure not to pinch the O-ring

ELECTRICAL CONNECTIONS

Make the following Electrical Connections:

- Connect supply ground wire to ground wire from Fixture Canopy and the ground wire from the Fixture Cord using supplied wire nut.
- Connect supply line conductor to black wire from Fixture Cord using supplied wire nut.
- Connect supply neutral conductor to white wire from Fixture Cord using supplied wire nut.

