

| | | |
|---------------|--------------|-------|
| Project Name: | Part Number: | Type: |
|---------------|--------------|-------|



VALUE SLIM WALL PACK

LED SLIM PROFILE WALL PACK



407-478-3759
www.ilp-inc.com

FEATURES

- Low profile die-cast aluminum housing
- Bronze polyester powder coat finish (std.)
- Custom and factory select colors available¹
- Isolated optical compartment with tempered glass lens and silicone gaskets
- 90° adjustable Type IV distribution or Optional IDA fixed model²
- Quick mount bracket standard for easy surface mount installation
- Three ½" coin plugs on sides for conduit or electronic photocell
- 120-277V Universal Voltage or 347V-480V High Voltage³
- 0-10V Dimmable Driver (std.)
- Deep box 10W CEC Title 20 compliant battery backup & cold weather battery¹
- Optional Field Adjustable Output device (FAO) allows individual luminaire lumen output control
- 3000K, 4000K & 5000K CCT Selectable via Integral selector
- >70 Color Rendering Index (CRI)
- Calculated L₇₀ >100,000 hrs @ 25°C per TM-21-11
- IP65 Rated Luminaire
- 5 Year Warranty
- ETL Listed for Wet Locations
- DesignLights Consortium® Premium Qualified Luminaire



Small



Large

¹Contact factory for pricing and availability

²Fixed 3000K CCT model only

³347-480V available in 5L, 8L, 10L Lumen Packages Only



SUITABLE APPLICATIONS

- Pedestrian Walkways
- Building Entrances
- Multi-use Facilities
- Industrial Facilities
- Parking Lots
- Storage Facilities
- Institutions
- Schools
- Loading Docks

ORDERING GUIDE:

| SERIES | LUMENS | DRIVER | CCT | FINISH |
|--------------------------|--------|--------------------------|---|-------------------------|
| SWP Value Slim Wall Pack | 2L | U 120-277V | CCTS Selectable CCT (5000K, 4000K, 3000K) 30 ³ | BRZ Bronze |
| | 3L | HV ¹ 347-480V | | BLK ⁴ Black |
| | 5L | | | WHT ⁴ White |
| | 8L | | | SLV ⁴ Silver |
| | 10L | | | |

| OPTIONS | | | |
|------------------------|---|-----------------------|---|
| Factory Installed | | Ship with Accessories | |
| SP1 | 10kA Max Univolt Surge Protection | SWP-FAO10V | Field Adjustable Output via 0-10V Wires |
| SP2 | 22kA Max 120-277V Surge Protector | SWP-ARM3-xxx | Pole Mount Arm Kit, 3" long (xxx=BRZ, BLK, WHT, SLV) |
| IDA ³ | Dark Sky IDA Fixture Seal of Approval | SWP-BPS-xxx | 18x9 Beauty Plate Kit, Small (xxx=BRZ, BLK, WHT, SLV) |
| LEDBB ^{1,2} | 10W UNIV Battery Backup (32°-100°F) | SWP-BPL-xxx | 18x9 Beauty Plate Kit, Large (xxx=BRZ, BLK, WHT, SLV) |
| LEDBBCT ^{1,2} | 20W UNIV CT Battery Backup (-22°-122°F) | | |

| Controls | |
|------------------|--------------------------------------|
| PCU ² | Electronic UNIV Photocell (120-277V) |

¹5L, 8L, 10L Lumen Packages Only
²Not available with HV option

³Fixed to 3000K CCT and no angle adjustability for IDA Compliance. Must choose 30 CCT and IDA option to qualify

⁴Contact Factory for pricing and availability



QUICK SHIP ITEMS:

| SERIES | LUMENS | DRIVER | COLOR | FINISH |
|--------------------------|--------|------------|--|------------|
| SWP Value Slim Wall Pack | 2L | U 120-277V | CCTS Selectable CCT (5000K, 4000K, 3000K) | BRZ Bronze |
| | 3L | | | |
| | 5L | | | |
| | 8L | | | |
| | 10L | | | |



VALUE SLIM WALL PACK

LED SLIM PROFILE WALL PACK

| LED SYSTEMS INFORMATION ¹ | | | 3000K | | 4000K | | 5000K | | Watts ² | Replaces |
|---|--|--|-----------|----------|-----------|----------|-----------|----------|--------------------|----------|
| Part Numbers | | | Lumens | Efficacy | Lumens | Efficacy | Lumens | Efficacy | | |
| SWP-2L-U-CCTS | | | 2,465 lm | 122 lm/W | 2,649 lm | 139 lm/W | 2,493 lm | 125 lm/W | 20 W | 100W MH |
| SWP-3L-U-CCTS | | | 3,160 lm | 134 lm/W | 3,310 lm | 145 lm/W | 3,226 lm | 136 lm/W | 24 W | 150W MH |
| SWP-5L-U-CCTS | | | 5,396 lm | 135 lm/W | 5,669 lm | 147 lm/W | 5,515 lm | 137 lm/W | 40 W | 175W MH |
| SWP-8L-U-CCTS | | | 8,254 lm | 138 lm/W | 8,678 lm | 150 lm/W | 8,455 lm | 141 lm/W | 60 W | 250W MH |
| SWP-10L-U-CCTS | | | 10,141 lm | 136 lm/W | 10,581 lm | 147 lm/W | 10,335 lm | 138 lm/W | 75 W | 320W MH |
| ¹ LED Chips are frequently updated therefore values are nominal ² Electrical data at 25°C (77°F). Actual wattage may differ by +/-10%. | | | | | | | | | | |

SPECIFICATIONS

CONSTRUCTION

Value Slim Wall Pack luminaire features a sleek low-profile die-cast aluminum housing with matching housing styles for both a small and medium size housings. Value Slim is protected with a durable Bronze polyester powder coat finish to withstand extreme weather changes without cracking or peeling (Consult factory for availability of alternate finishes). The Adjustable head pivots up to 90° to allow for more forward throw illumination (IDA option eliminates the adjustability). Universal quick mount bracket eliminates the need to drill through the luminaire housing ensuring reliable IP65 ingress protection and fast hands-free mounting via hanging mechanism. One-piece silicone gasket seals door and back box.

ELECTRICAL

High-performance driver features over-voltage, under-voltage, short circuit and over temperature protection. 0-10V dimming (10% - 100%) standard. Standard Universal Voltage (120-277 Vac) Input 50/60 Hz or optional High Voltage (347-480 Vac). L70 >100,000 hrs. in accordance of IESNA TM-21-11 Projected values at 25°C Ambient temperature. Total harmonic distortion: <20%. Power factor: >0.90. Input power stays constant over life. Minimum 2.5kV surge rating. Optional Field Adjustable Output (FAO) accessory allows for individual lumen output control with 7 adjustable light levels per lumen package. 10W CEC Title 20 compliant battery backup & cold weather battery option available. 120-277V 10W CEC Title 20 compliant battery backup & cold weather battery options provide 90 minutes of constant power to the LED system, ensuring code compliance.

INSTALLATION

The Value Slim Wall Pack features a universal quick mount bracket, allowing for effortless installation to standard 3½" to 4" round/octagonal, 4" square, single gang, masonry junction boxes or vertical surface mounting (secured by four lag bolts (supplied by others)). ½" NPT conduit entry points allow for surface-conduit or thru-branch wiring. Back box is an authorized electrical wiring compartment. Fixture leads exit the back of the casting through a poke-in water-tight grommet. Integral CCT selector allows for toolless CCT tuning at installation.

OPTICS

The isolated silicone sealed optical chamber utilizes a proprietary high-reflective white molded baffle. Optical assembly features an impact-resistant tempered glass lens and meets IESNA requirements for full cutoff compliance. Available in five lumen packages and CCT selectable via an integral CCT selector switch (3000K, 4000K, & 5000K). The Adjustable head pivots up to 90° to allow for more forward throw illumination. IDA option is fixed 3000K and does not allow for head pivoting (full-cutoff).

THERMAL

The Value Slim Wall Pack features an array of High-efficacy mid-power LED's on a metal core circuit board. The LED board is mounted directly to a cast aluminum housing with heat dissipating fins to provide excellent thermal performance extending the life of electronic components. Operating Ambient Temperature: -40°C to +40°C (-40°F to 104°F) Operating temperature for standard battery backup: -0°C to +50°C (-32°F to +122°F), Cold Weather battery backup: -30°C to +50°C (-22°F to +122°F).

CONTROLS

Three ½" NPT apertures allow for field or factory installed 120-277V universal electronic photocell.

CERTIFICATIONS

UL Listed for wet locations. Tested in accordance with IESNA LM-79 and LM-80 standards.

WARRANTY

5 Year Warranty (Terms and Conditions apply). See Website for more details. <https://www.ilp-inc.com/documents/>



VALUE SLIM WALL PACK

LED SLIM PROFILE WALL PACK

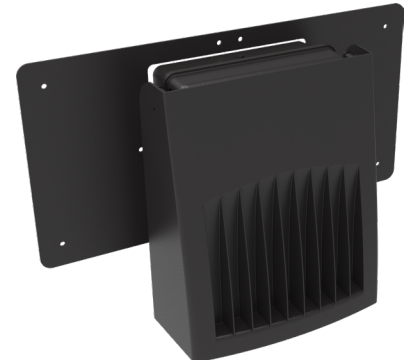
ADDITIONAL FEATURES & OPTIONS



Quick Mount Bracket



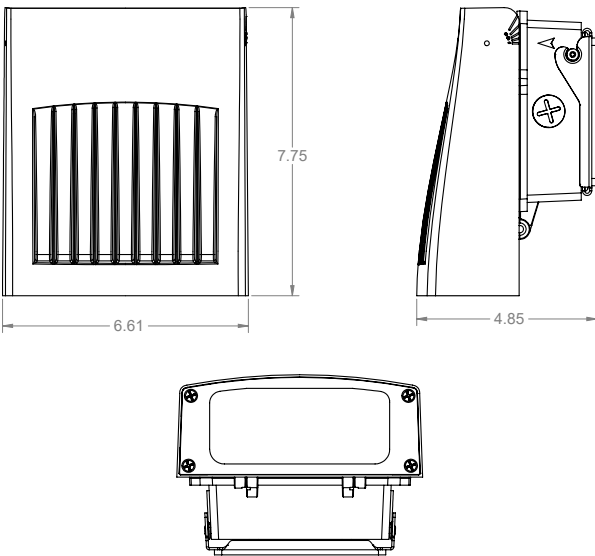
90° Adjustable Type IV Distribution



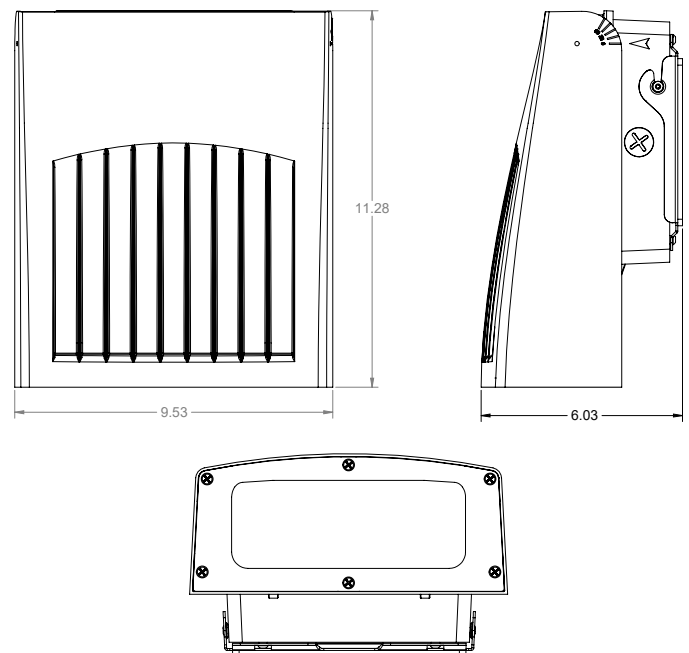
Optional Beauty Plate

LINE DRAWINGS

2L & 3L Small Housing



5L, 8L & 10L Large Housing



Large with Deep Box Cold Temp Battery Backup

