



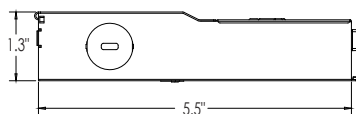
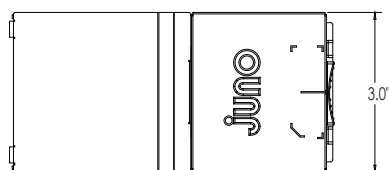
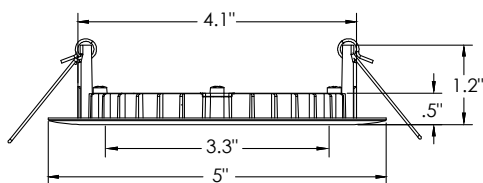
Juno Wafer™ LED Downlight Series

4" LED Ultra-Thin Wafer Switchable Downlight 670 Lumens

WF4 SWW5 Series



Dimensions



Project:
Fixture Type:
Location:
Contact/Phone:

Product Features

The 4" round smooth with 5CCT Switchable White technology provides high-quality light output and efficiency featuring a switch for easy color temperature adjustment to choose between 2700K, 3000K, 3500K, 4000K, or 5000K - while eliminating the need for recessed housings.

- Round smooth lens trim designed to distribute precise even illumination for general purpose areas
- Canless - no can required; equals easy to install and less labor
- 5 selectable color temperatures to choose with a switch ranging from warm (2700K) to daylight (5000K) allowing customization for endless applications

Applications

- Residential and light commercial applications including multi-family, hospitality, assisted living, dormitories and other multi-level construction
- Shallow slim profile allows for easy remodel or new construction insulated and drop ceiling installations
- Wet rated and airtight: perfect for showers, bathrooms, and outdoor soffits

Performance

Delivered Lumens	670L Nominal at 3000K
LED Color Temperature	Switchable White (27K, 30K, 35K, 40K, 50K) Default set at 3000K
CRI	90+
Voltage	Dedicated 120V
Dimming	Dimmable to 10% only with triac dimmers.

For a list of compatible dimmers see JUNO-WAFERS-DIM

Specifications

Aperture:	3.3"
Ceiling opening:	4.25"
Overlap trim:	5"
Height:	1.2"



Juno Wafer™ LED Downlight Series

4" LED Ultra-Thin Wafer Switchable Downlight 670 Lumens



ORDERING INFORMATION

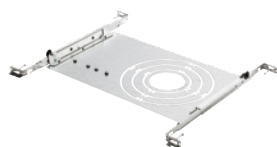
Downlight

Example: WF4 SWW5 90CRI MW M6

Series	Trim Style	Color Temperature	Rendering Index		Finish	
WF4	4" Wafer-Thin LED Downlight	SWW5 Switchable White (2700K, 3000K, 3500K, 4000K, 5000K)	90CRI	90+ CRI	MW	Matte White
	(BLANK) Round				MB	Matte Black

Accessories: Order as separate catalog number.

Series	
WF8643 PAN U	Universal New Construction Pan
WF4 PAN R12	4" new construction pan, retail pack of 12
WF4GR MW JZ	4" Goof Ring
WFJB U	Remodel Joist Bar
WFEXC6 SW3PIN FT4	3-Pin 6ft Cable
WFEXC10 SW3PIN FT4	3-Pin 10ft Cable
WFEXC20 SW3PIN FT4	3-Pin 20ft Cable



WF8643 UNIVERSAL New Construction Pan



WF4 PAN 4" New Construction Pan



Remodel Joist Bar



WFEXCx 3-Pin Cable

PERFORMANCE DATA

	WF4
Input Voltage	120V
Input Power Typical	9W (+/-5%)
Frequency	60 Hz
EMI/RFI	FCC Title 47, Part 15 Class B (consumer)
Minimum Starting Temp	-40°F (-40°C)

Note: Actual performance may differ as a result of end-user environment and application. All values are design or typical values, measured under laboratory conditions at 25°C.

LIGHTING PERFORMANCE DATA DONNÉES SUR LE RENDEMENT DE L'ÉCLAIRAGE

Light Appearance (CCT)
Aspect de la lumière (CCT)

2700K soft white blanc doux	665 lumens 74 lumens per watt
3000K warm white blanc chaud	670 lumens 74 lumens per watt
3500K neutral white blanc neutre	680 lumens 76 lumens per watt
4000K cool white blanc froid	685 lumens 76 lumens per watt
5000K daylight blanc neutre	690 lumens 76 lumens per watt

Watts **9**
Color Accuracy (CRI) **90**
Précision des couleurs (CRI)



Juno Wafer™ LED Downlight Series

4" LED Ultra-Thin Wafer Switchable Downlight 670 Lumens



Specifications

Housing

Polycarbonate injection molded outer frame, with steel back plate. Non-conductive dead-front trim design suitable for a wide range of applications and codes requiring a non-conductive lens • FT4 3-pin plenum rated cable connector to connect from module to remote driver box • Steel spring clip for easy installation. 4" cut out template is provided to ensure a correct sized hole is cut into ceiling for proper installation of the trim. Size of hole should not exceed 4 ¼ inches for this product • Can be installed from 3/8" to 1 ½" ceiling thickness • Can be removed from below the ceiling for service or replacement.

LED Light Engine

Switchable white color temperature from 2700K, 3000K, 3500K, 4000K, 5000K • 90 CRI minimum • Color accuracy within 4 step McAdams Ellipse at the end CCT (2700K and 5000K), within 6 step McAdams Ellipse in the middle CCT (3000K, 3500K, and 4000K) • Dimming 100% to 10% with most standard incandescent dimers (see list of approved dimmers).

Driver

Connect directly to 120V Class-2 (CAN ICES-005 (B) / NMB-005 (B)) LED driver • 120V 60 Hz constant current driver provides noise free operation • IC rated driver with convenience of a switch to choose between 5 selectable color temperature options ranging from 2700K (warm white), 3000K, 3500K, 4000K, or 5000K (daylight) • The isolated driver integrated inside steel remote box with four 7/8" knockouts with slots for pryout. Suitable for pulling wires with the 12 cubic-inch wiring compartment to accommodate up to (6) 14 gauge insulated conductors; making the Wafer LED Downlights much easier to wire in 2in/2out (plus ground) daisy-chain applications and contractor friendly • 3" plenum space required for installation of the remote driver box.

Optical System

Edge-lit LED technology uses light guided plate to distribute light • Polycarbonate lens provides even illumination throughout the space • Efficient system that can produce over 670 lumens while using 9W • Replaces 65W incandescent.

Life

Rated for 50,000 hours at 70% lumen maintenance.

Labels

CSA certified to US and Canadian safety standards • ENERGY STAR® certified product • Suitable for wet location • Air-Loc certified in accordance with ASTM E283-2004 • NOM Certified • Can be used to comply with California Title 24 Part 6 High Efficacy LED light Source Requirements • U.S. Patent No. 10,681,784.

Testing

All reports are based on published industry procedures; field performance may differ from laboratory performance.

Warranty 3-year limited warranty. Complete warranty terms located at: www.acuitybrands.com/CustomerResources/Terms_and_conditions.aspx

Specifications subject to change without notice.



Juno Wafer™ LED Downlight Series

4" LED Ultra-Thin Wafer Switchable Downlight 670 Lumens



PHOTOMETRICS

Distribution Curve

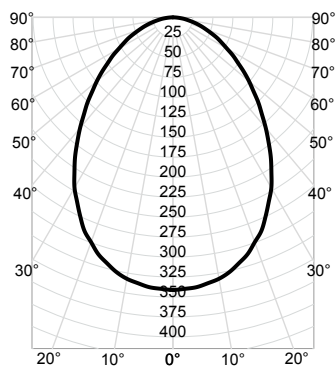
Distribution Data

Output Data

Coefficient of Utilization

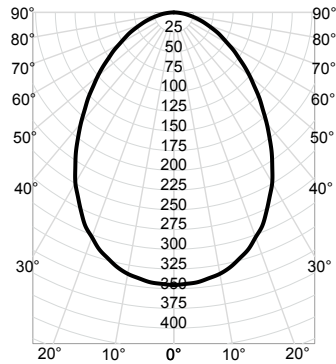
Illuminance Data at 30" Above Floor for a Single Luminaire

WF4 SWW5 90CRI 2700K Input Watts: 8.9, Delivered Lumens: 670, LPW: 75.3, S/MH: 1.09, Test No: ISF 202630P1



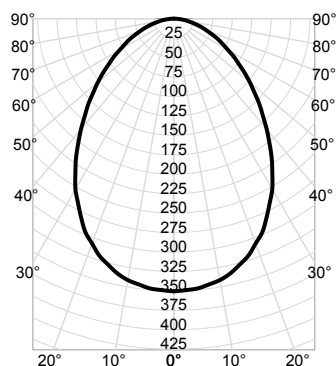
CP Summary		Zonal Lumen Summary				Coefficients of Utilization										Cone of Light			Luminance (cd/sq.m)	
0°	Zone	Lumens	% Fixture	pw	50%	30%	10%	50%	30%	10%	50%	30%	10%	Mounting Height	Initial FC Center Beam	Beam Diameter	Average Luminance			
0°	0° - 30°	243	36%	0	119	119	119	116	116	116	111	111	111	6.0	9.5	10.7	0°	42,950		
5°	0° - 40°	369	55%	1	106	102	98	104	100	97	99	96	94	8.0	5.3	14.2	45°	26,951		
15°	0° - 60°	568	85%	2	94	88	82	92	86	81	88	84	80	10.0	3.4	17.8	55°	21,820		
25°	0° - 90°	670	100%	3	84	76	70	82	75	70	79	73	68	12.0	2.4	21.3	65°	18,172		
35°	90° - 180°	0	0%	4	75	67	61	74	66	60	71	65	60	14.0	1.7	24.9	75°	14,836		
45°	0° - 180°	670	100%	5	68	60	53	67	59	53	65	58	53	Beam Angle: 83.2°			85°	11,422		
55°	99			6	62	53	47	61	53	47	59	52	47	Field Angle: 147.3°						
65°	61			7	57	48	43	56	48	42	54	47	42							
75°	31			8	52	44	39	51	44	38	50	43	38							
85°	8			9	48	40	35	48	40	35	46	40	35							
90°	0			10	45	37	32	44	37	32	43	37	32							

WF4 SWW5 90CRI _ 3000K Input Watts: 8.9, Delivered Lumens: 678, LPW: 76.2, S/MH: 1.09, Test No: ISF 202630P2



CP Summary		Zonal Lumen Summary				Coefficients of Utilization										Cone of Light			Luminance (cd/sq.m)	
0°	Zone	Lumens	% Fixture	pw	50%	30%	10%	50%	30%	10%	50%	30%	10%	Mounting Height	Initial FC Center Beam	Beam Diameter	Average Luminance			
0°	0° - 30°	246	36%	0	119	119	119	116	116	116	111	111	111	6.0	9.6	10.7	0°	43,464		
5°	0° - 40°	374	55%	1	106	102	98	104	100	97	99	96	94	8.0	5.4	14.2	45°	27,273		
15°	0° - 60°	575	85%	2	94	88	82	92	86	81	88	84	80	10.0	3.5	17.8	55°	22,081		
25°	0° - 90°	678	100%	3	84	76	70	82	75	70	79	73	68	12.0	2.4	21.3	65°	18,389		
35°	90° - 180°	0	0%	4	75	67	61	74	66	60	71	65	60	14.0	1.8	24.9	75°	15,014		
45°	0° - 180°	678	100%	5	68	60	53	67	59	53	65	58	53	Beam Angle: 83.2°			85°	11,559		
55°	101			6	62	53	47	61	53	47	59	52	47	Field Angle: 147.3°						
65°	62			7	57	48	43	56	48	42	54	47	42							
75°	31			8	52	44	39	51	44	38	50	43	38							
85°	8			9	48	40	35	48	40	35	46	40	35							
90°	0			10	45	37	32	44	37	32	43	37	32							

WF4 SWW5 90CRI _ 3500K Input Watts: 8.9, Delivered Lumens: 688, LPW: 77.3, S/MH: 1.09, Test No: ISF 202630P3



CP Summary		Zonal Lumen Summary				Coefficients of Utilization										Cone of Light			Luminance (cd/sq.m)	
0°	Zone	Lumens	% Fixture	pw	50%	30%	10%	50%	30%	10%	50%	30%	10%	Mounting Height	Initial FC Center Beam	Beam Diameter	Average Luminance			
0°	0° - 30°	249	36%	0	119	119	119	116	116	116	111	111	111	6.0	9.7	10.7	0°	44,106		
5°	0° - 40°	379	55%	1	106	102	98	104	100	97	99	96	94	8.0	5.5	14.2	45°	27,676		
15°	0° - 60°	583	85%	2	94	88	82	92	86	81	88	84	80	10.0	3.5	17.8	55°	22,407		
25°	0° - 90°	688	100%	3	84	76	70	82	75	70	79	73	68	12.0	2.4	21.3	65°	18,661		
35°	90° - 180°	0	0%	4	75	67	61	74	66	60	71	65	60	14.0	1.8	24.9	75°	15,235		
45°	0° - 180°	688	100%	5	68	60	53	67	59	53	65	58	53	Beam Angle: 83.2°			85°	11,730		
55°	102			6	62	53	47	61	53	47	59	52	47	Field Angle: 147.3°						
65°	63			7	57	48	43	56	48	42	54	47	42							
75°	31			8	52	44	39	51	44	38	50	43	38							
85°	8			9	48	40	35	48	40	35	46	40	35							
90°	0			10	45	37	32	44	37	32	43	37	32							



Juno Wafer™ LED Downlight Series

4" LED Ultra-Thin Wafer Switchable Downlight 670 Lumens



PHOTOMETRICS

Distribution Curve

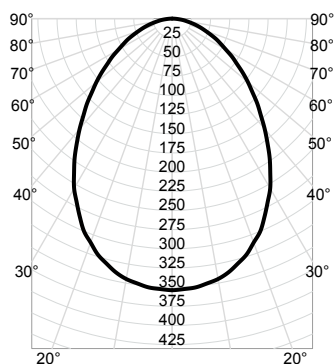
Distribution Data

Output Data

Coefficient of Utilization

Illuminance Data at 30" Above Floor for a Single Luminaire

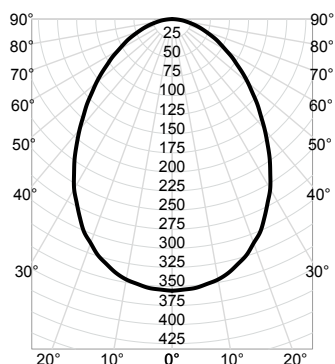
WF4 SWW5 90CRI _ 4000K Input Watts: 8.9, Delivered Lumens: 695, LPW: 78.1, S/MH: 1.09, Test No: ISF 202630P4



CP Summary	Zonal Lumen Summary				Coefficients of Utilization										Cone of Light			Luminance (cd/sq.m)
	0°	Zone	Lumens	% Fixture	pw	80%		20%		50%		Mounting Height	Initial FC Center Beam	Beam Diameter	Average Luminance			
						50%	30%	10%	50%	30%	10%					50%	30%	10%
0°	354	0° - 30°	252	36%	0	119	119	119	116	116	111	111	111	6.0	9.8	10.7	0°	44,555
5°	352	0° - 40°	383	55%	1	106	102	98	104	100	97	99	96	8.0	5.5	14.2	45°	27,958
15°	331	0° - 60°	589	85%	2	94	88	82	92	86	81	88	84	10.0	3.5	17.8	55°	22,635
25°	285	0° - 90°	695	100%	3	84	76	70	82	75	70	79	73	12.0	2.5	21.3	65°	18,851
35°	222	90° - 180°	0	0%	4	75	67	61	74	66	60	71	65	14.0	1.8	24.9	75°	15,391
45°	157	0° - 180°	695	100%	5	68	60	53	67	59	53	65	58				85°	11,849
55°	103				6	62	53	47	61	53	47	59	52					
65°	63				7	57	48	43	56	48	42	54	47					
75°	32				8	52	44	39	51	44	38	50	43					
85°	8				9	48	40	35	48	40	35	46	40					
90°	0				10	45	37	32	44	37	32	43	37					

Beam Angle: 83.2°
Field Angle: 147.3°

WF4 SWW5 90CRI _ 5000K Input Watts: 8.9, Delivered Lumens: 698, LPW: 78.4, S/MH: 1.09, Test No: ISF 202630P5



CP Summary	Zonal Lumen Summary				Coefficients of Utilization										Cone of Light			Luminance (cd/sq.m)
	0°	Zone	Lumens	% Fixture	pw	80%		20%		50%		Mounting Height	Initial FC Center Beam	Beam Diameter	Average Luminance			
						50%	30%	10%	50%	30%	10%					50%	30%	10%
0°	356	0° - 30°	253	36%	0	119	119	119	116	116	111	111	111	6.0	9.9	10.7	0°	44,748
5°	353	0° - 40°	385	55%	1	106	102	98	104	100	97	99	96	8.0	5.6	14.2	45°	28,079
15°	332	0° - 60°	592	85%	2	94	88	82	92	86	81	88	84	10.0	3.6	17.8	55°	22,733
25°	286	0° - 90°	698	100%	3	84	76	70	82	75	70	79	73	12.0	2.5	21.3	65°	18,933
35°	223	90° - 180°	0	0%	4	75	67	61	74	66	60	71	65	14.0	1.8	24.9	75°	15,457
45°	158	0° - 180°	698	100%	5	68	60	53	67	59	53	65	58				85°	11,901
55°	104				6	62	53	47	61	53	47	59	52					
65°	64				7	57	48	43	56	48	42	54	47					
75°	32				8	52	44	39	51	44	38	50	43					
85°	8				9	48	40	35	48	40	35	46	40					
90°	0				10	45	37	32	44	37	32	43	37					

Beam Angle: 83.2°
Field Angle: 147.3°