



| |
|----------------|
| Catalog Number |
| Notes |
| Type |

Contractor Select™

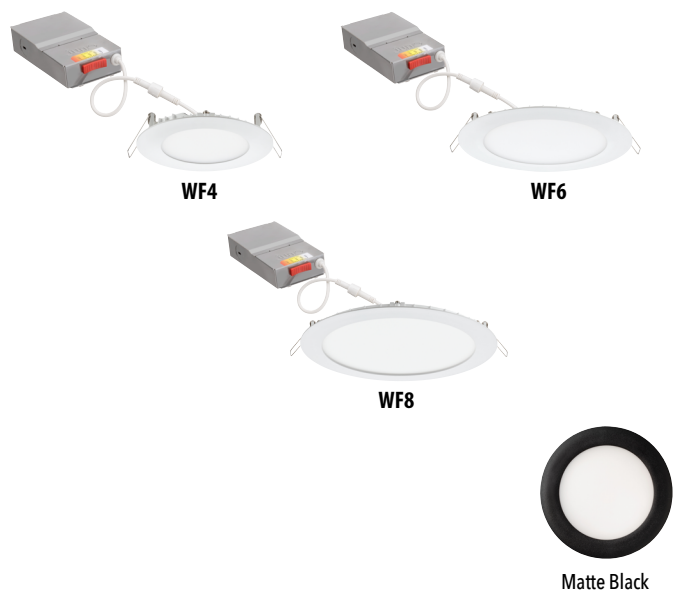
WF4, WF6 & WF8 SWW5

4", 6" & 8" Switchable White Downlight LED
Ultra-Thin Wafer

The 4", 6" & 8" round smooth with 5CCT Switchable White technology provide high-quality light output and efficiency featuring a switch for easy color temperature adjustment to choose between 2700K, 3000K, 3500K, 4000K, or 5000K - while eliminating the need for recessed housings.

FEATURES:

- Round smooth lens trim designed to distribute precise even illumination for general purpose areas
- Canless - no can required; equals easy to install and less labor
- 5 selectable color temperatures to choose with a switch ranging from warm (2700K) to daylight (5000K) allowing customization for endless applications
- Dimmable to 10%



| Catalog Number | UPC | Description | Replaces Up To | Lumens | Input Watts | CCT | CRI | Voltage | Finish | Dimmng Protocol | Pallet Qty. |
|----------------------|--------------|-----------------------------|----------------|--------|-------------|-------------------------------|-----|---------|-------------|-----------------|-------------|
| WF4 SWW5 90CRI MW M6 | 194994243465 | 4" Wafer-Thin LED Downlight | 65W | 670 | 9W | 2700K/3000K/3500K/4000K/5000K | 90 | 120V | Matte White | Triac | 540 |
| WF4 SWW5 90CRI MB M6 | 194994243595 | 4" Wafer-Thin LED Downlight | 65W | 670 | 9W | 2700K/3000K/3500K/4000K/5000K | 90 | 120V | Matte Black | Triac | 540 |
| WF6 SWW5 90CRI MW M6 | 194994243731 | 6" Wafer-Thin LED Downlight | 75W | 970 | 13W | 2700K/3000K/3500K/4000K/5000K | 90 | 120V | Matte White | Triac | 360 |
| WF6 SWW5 90CRI MB M6 | 194994243809 | 6" Wafer-Thin LED Downlight | 75W | 970 | 13W | 2700K/3000K/3500K/4000K/5000K | 90 | 120V | Matte Black | Triac | 450 |
| WF8 SWW5 90CRI MW M6 | 194994243915 | 8" Wafer-Thin LED Downlight | 100W | 1640 | 19W | 2700K/3000K/3500K/4000K/5000K | 90 | 120V | Matte White | Triac | 240 |

Accessories: Order as separate catalog number.

| | |
|--------------------|--|
| WF8643 PAN U | Universal New Construction Pan |
| WF4 PAN R12 | 4" new construction pan, retail pack of 12 |
| WF6 PAN R12 | 6" new construction pan, retail pack of 12 |
| WF4GR MW | 4" Goof Ring |
| WF6GR MW | 6" Goof Ring |
| WF8GR MW JZ | 8" Goof Ring |
| WFJB U | Remodel Joist Bar |
| WFEXC6 SW3PIN FT4 | 3-Pin 6ft Cable |
| WFEXC10 SW3PIN FT4 | 3-Pin 10ft Cable |
| WFEXC20 SW3PIN FT4 | 3-Pin 20ft Cable |



WF8643 Universal
New Construction Pan



WF4_WF6 PAN
New Construction Pan



Remodel Joist Bar



WFEXC_
extension cable



Specifications

HOUSING:

Polycarbonate injection molded outer frame, with steel back plate. Non-conductive dead-front trim design suitable for a wide range of applications and codes requiring a non-conductive lens • FT4 3-pin plenum rated cable connector to connect from module to remote driver box • Steel spring clip for easy installation. 4", 6" or 8" cut out template is provided to ensure a correct sized hole is cut into ceiling for proper installation of the trim. Size of hole should not exceed 4-1/4" for the WF4, 6-1/4" for the WF6 and 8-1/4" for the WF8 • Can be installed from 3/8" to 1 1/2" ceiling thickness • Can be removed from below the ceiling for service or replacement.

LED LIGHT ENGINE:

Switchable white color temperature from 2700K, 3000K, 3500K, 4000K, 5000K • 90 CRI minimum • Color accuracy within 4 step McAdams Ellipse at the end CCT (2700K and 5000K), within 6 step McAdams Ellipse in the middle CCT (3000K, 3500K, and 4000K) • Dimming 100% to 10% with most standard incandescent dimmers ([see list of approved dimmers](#)).

DRIVER:

Connect directly to 120V Class-2 (CAN ICES-005 (B) / NMB-005 (B)) LED driver. 120V 60 Hz constant current driver provides noise free operation • IC rated driver with convenience of a switch to choose between 5 selectable color temperature options ranging from 2700K (warm white), 3000K, 3500K, 4000K, or 5000K (daylight) • The isolated driver integrated inside steel remote box with four 7/8" knockouts with slots for pryout. Suitable for pulling wires with the 12 cubic-inch wiring compartment to accommodate up to (6) 14 gauge insulated conductor, or (4) 12 gauge insulated conductors; making the Wafer LED Downlights much easier to wire in 2in/2out (plus ground) daisy-chain applications and contractor friendly • 2" plenum space required for installation of the remote driver box • Suitable for installation in t-grid and drop ceiling applications with universal new construction pan.

OPTICAL SYSTEM:

Edge-lit LED technology uses light guided plate to distribute light • Polycarbonate lens provides even illumination throughout the space • Efficient system that can produce over 670 lumens while using 9W (WF4), 970 lumens while using 13W (WF6) and 1640 lumens while using 19W (WF8) • Replaces 65W incandescent (WF4), 75W incandescent (WF6) and 100W incandescent (WF8).

LIFE:

Rated for 50,000 hours at 70% lumen maintenance.

LABELS:

CSA certified to US and Canadian safety standards • ENERGY STAR® certified product • Suitable for wet location • Air-Loc certified in accordance with ASTM E283-2004 • NOM Certified • Can be used to comply with California Title 24 Part 6 High Efficacy LED light Source Requirements • U.S. Patent No. 10,681,784.

TESTING:

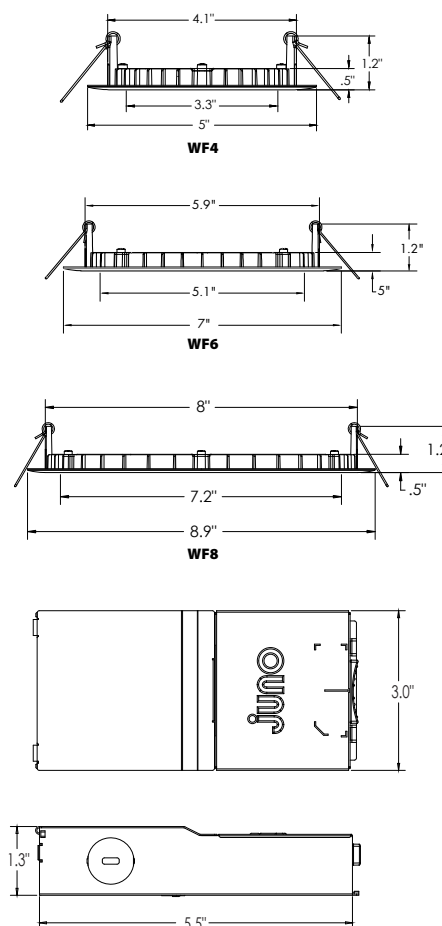
All reports are based on published industry procedures; field performance may differ from laboratory performance.

WARRANTY:

3-year limited warranty. Complete warranty terms located at: www.acuitybrands.com/support/warranty/terms-and-conditions

Note: Actual performance may differ as a result of end-user environment and application. All values are design or typical values, measured under laboratory conditions at 25 °C. Specifications subject to change without notice.

Dimensions



PERFORMANCE DATA

| | WF4 SWW5 | WF6 SWW5 | WF8 SWW5 |
|-----------------------|--|--|--|
| Input Voltage | 120V | 120V | 120V |
| Input Power Typical | 9W (+/-5%) | 13W (+/-5%) | 19W (+/-5%) |
| Frequency | 60 Hz | 60 Hz | 60 Hz |
| EMI/RFI | FCC Title 47, Part 15 Class B (consumer) | FCC Title 47, Part 15 Class B (consumer) | FCC Title 47, Part 15 Class B (consumer) |
| Minimum Starting Temp | -40°F (-40°C) | -40°F (-40°C) | -40°F (-40°C) |

Note: Actual performance may differ as a result of end-user environment and application. All values are design or typical values, measured under laboratory conditions at 25°C.