

Vaporproof LED-Ready Strip

Two - Four Lamp Positions

Four Foot / Eight Foot

Lamps NOT Included



Description

VSB series LED-Ready vaporproof strip fixtures are gasketed to provide dust and moisture resistant illumination. They withstand corrosion, splashing water, hose-directed water, and damage from external ice formation. This fixture uses 2, 3 or 4, line voltage 4' LED lamps (Type B).

Certifications



Compatible with **F32T8/8xx/LED/16W/AC** & **F32T8/8xxLED/12.5W/AC** Linear LED Lamps



click image for spec sheets

LAMPS NOT INCLUDED

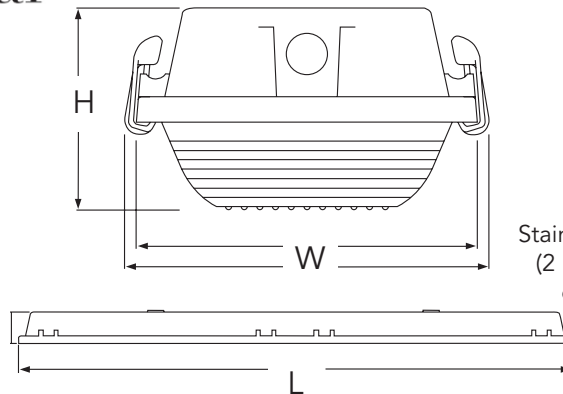
Applications

Entrance Lighting
Car Washes
Public Access
Parking Structures

Beverage Industry
Food Processing
Construction Sites
Industrial Lighting

Specifications

- No ballast installed
- Includes shunted and non-shunted T8 lamp holder so they are compatible with single-ended and double-ended 4' LED tubes (Type B)
- One-piece upper body; no seams to crack, break or leak
- Reinforced fiberglass body is rugged and corrosion resistant
- 5VA Flammability rating
- Closed cell polyester gasket
- High gasket compression recovery ensures solid seal over life of fixture
- Knockouts on each end



VS-CB
Stainless Steel Chain Bail
(2 needed per fixture,
order separately)

Sample Ordering Information

VSB4A2LT8

4-Foot LED Ready Vaporproof Strip
Impact resistant acrylic lens
2 T8 LED Lamp Positions
No Factory Installed Options
Standard Disconnect

Ordering Information

Model	No. of Lamp Positions**	Lens	(L) Length	(W) Width	(H) Height
VSB4A2LT8	2	Impact resistant acrylic lens	51.6"	7.33"	4.13"
VSB4A3LT8	3				
VSB8A4LT8	4		100"		

*Foreign and domestic components.

**Lamps Not Included

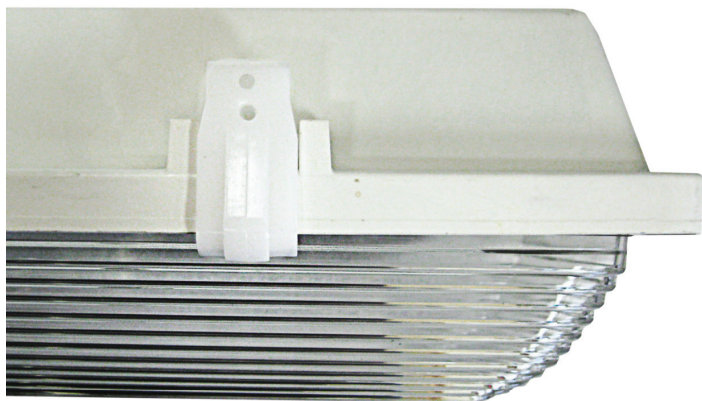
Specifications subject to change without notice.

Howard Lighting Products | 580 Eastview Drive | Laurel, MS 39443
(toll free) 800.956.3456 | (direct) 601.422.0033 | (fax) 601.422.1652
www.HowardLightingProducts.com

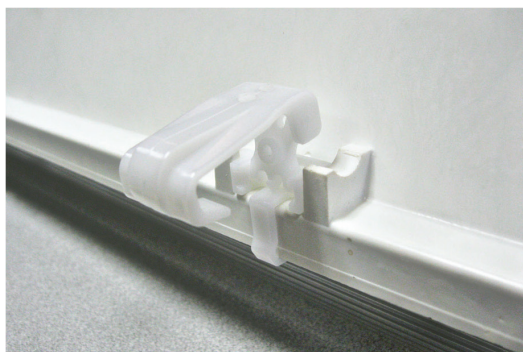
Page 1 of 2
Rev: 1/29/2019

Hardware - Latches

White Plastic

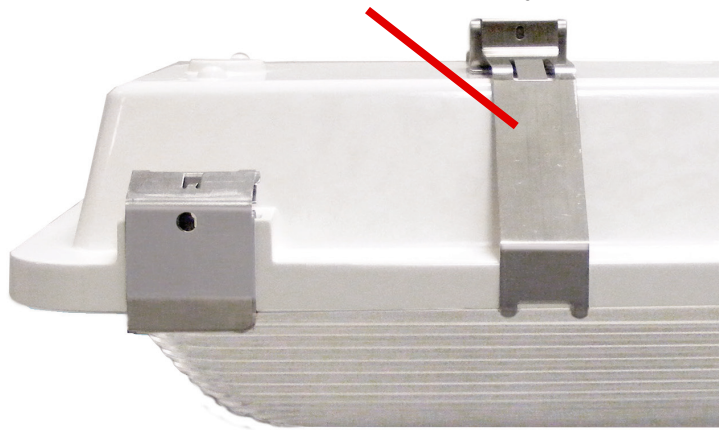


White Plastic Latch locks open during maintenance



Stainless Steel

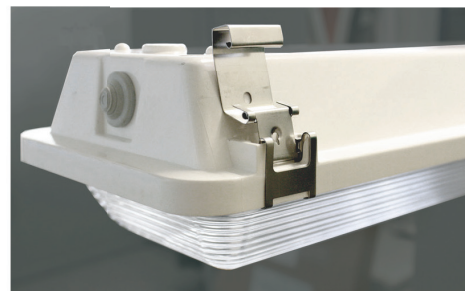
- withstands corrosive environments
- Stainless Steel Mounting Brackets
come standard with every fixture



Captive Keeper secures latch to housing preventing accidental loss of latch



Keeper



Latch Features:

Latches can be made Tamper Resistant with the addition of locking screws*

- White Plastic #4-32 x 1/2" Screws
- Stainless Steel #6-32 x 3/8" Screws

*Screws not included in fixture

Stainless Steel Mounting Brackets
(Model# **VSAX-MB-2L-2**)
Come standard with every fixture

